



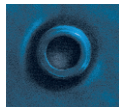
## Direct Vent Gas Water Heater A Unique Balanced Flue Design

A proven performer with years of laboratory testing and field trials including winters in the extreme cold, the GSW Direct Vent water heater operates quietly with no need for an electric fan or external power supply. The balanced flue design with a side wall vent termination allows installation in locations without a chimney. The sealed combustion chamber and coaxial vent uses fresh air taken from outside rather than pre-heated air from within the home. Quiet, reliable and efficient operation in a quality design: the GSW Direct Vent gas water heater.

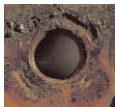
Flame Safe™ technology – designed to protect the consumer against ignition of flammable vapours.

### High Quality Features

- No chimney needed
- Easy to install flexible co-axial vent supplied with water heater
- Removable anode(s)
- Meets latest energy efficiency standards
- Galvanized bottom pan protects from corrosion
- Complies with R2000 home requirements
- No external power supply required
- Glass-lined tank for longer life
- Factory-installed plastic-lined nipples with heat traps
- Automatic gas control
- CFC-free foam insulation
- **50 gallon high input for combo applications**



With  
TankSaver®



Without  
TankSaver®

### Exclusive design.

The exclusive TankSaver® design works to prolong tank life. TankSaver® impedes corrosion by guarding metal tank openings from exposure and keeping them watertight. The durable construction virtually eliminates rust.



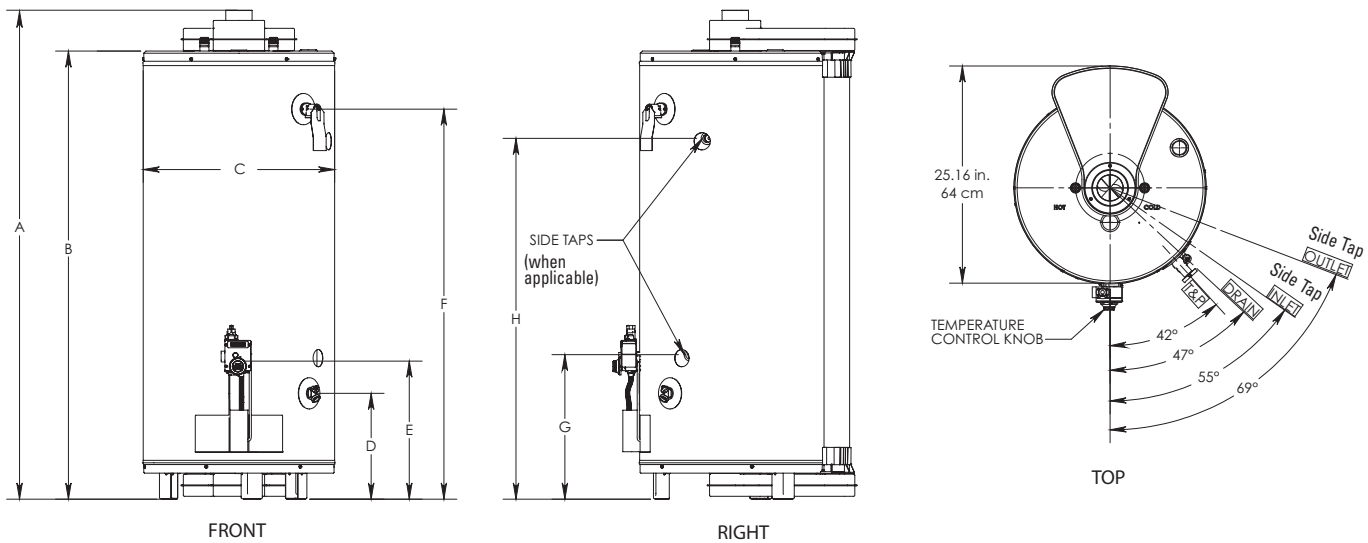
# Direct Vent Gas Water Heater

## CAPACITY & PERFORMANCE

MODEL	CAPACITY USG (L)	BTU INPUT PER HR	RECOVERY (USG) 100°F/55°C RISE	ENERGY FACTOR (EF)	OVERALL HEIGHT (IN./CM)	HEIGHT TO TOP OF TANK (IN./CM)	HEATER DIAMETER (IN./CM)	HEIGHT TO DRAIN VALVE (IN./CM)	HEIGHT TO GAS VALVE (IN./CM)	HEIGHT TO T&P VALVE (IN./CM)	SIDE WATER CONNECTIONS (IN./CM)		APPROX. SHIPPING WEIGHT LB (KG)
					A	B	C	D	E	F	G	H	
<b>NATURAL GAS - 6 Year Tank &amp; 1 Year Parts Warranty</b>													
6G40BFNA-FV	40 (151)	38,000	75	0.59	54.8 (139)	51.9 (131)	22.3 (57)	12.3 (31)	16 (40)	45.2 (114)	N/A	N/A	167 (76)
6G50TFNA-FV	50 (189)	42,000	75	0.59	63.8 (161)	60.8 (154)	22.3 (57)	12.3 (31)	16 (40)	54 (137)	N/A	N/A	185 (84)
6G50THBFA-FV*	50 (189)	50,000	77	0.59	64.8 (164)	62.3 (158)	22.3 (57)	12.5 (32)	16.3 (41)	55.5 (140)	16.6 (42)	53.8 (136)	187 (85)
<b>PROPANE - 6 Year Tank &amp; 1 Year Parts Warranty</b>													
6G40BFP-FV	40 (151)	38,000	75	0.59	54.8 (139)	51.9 (131)	22.3 (57)	12.3 (31)	16 (40)	45.2 (114)	N/A	N/A	167 (76)
6G50TFP-FV	50 (189)	42,000	75	0.59	63.8 (161)	60.8 (154)	22.3 (57)	12.3 (31)	16 (40)	54 (137)	N/A	N/A	185 (84)

All units rated to 7,700 ft. (2,347 meters)

\* Model with Side Taps



### GSW Warranty:

All GSW Water Heaters will be replaced free of charge in the case of tank leakage within the stated warranty period from the date of installation in domestic applications, and one year in commercial applications. All parts supplied are warranted for one year. Warranty does not include labour. Consult owner's manual for complete details.

**GSW Water Heating**  
**HEAD OFFICE:**  
 599 Hill Street West  
 Fergus, ON, Canada N1M 2X1  
 Tel: 888-599-2837  
 Fax: 519-787-5500  
 E-mail: [gswinfo@gsw-wh.com](mailto:gswinfo@gsw-wh.com)  
[www.gsw-wh.com](http://www.gsw-wh.com)